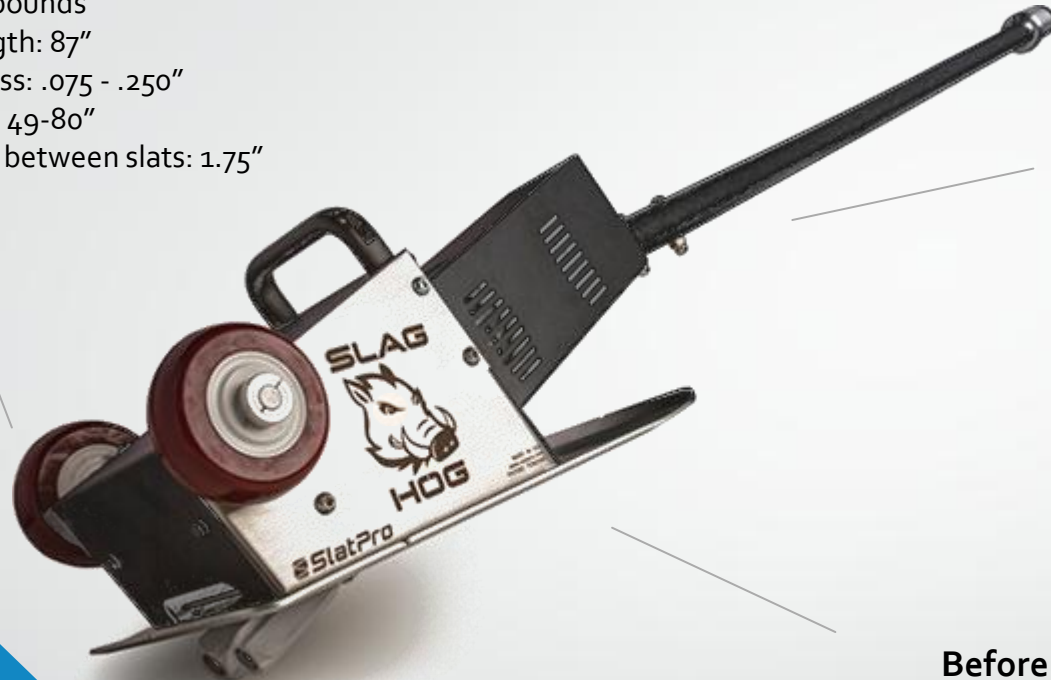


SLAG HOG SLAT CLEANER

Technical Specifications

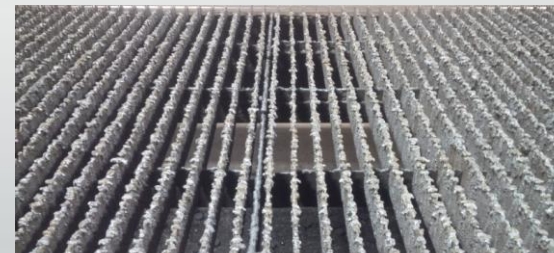
- Power: 7 Amp 120V single phase
- Weight: 44 pounds
- Overall Length: 87"
- Slat Thickness: .075 - .250"
- Slat Length: 49-80"
- Min spacing between slats: 1.75"



Quickly and easily remove tough slag and dross buildup from your laser support surface. The Slag Hog works on copper as well as steel support slats and can be operated while the laser machine is running. Perform cleaning from one side of cutting bed with a single operator.

- Slat cleaning can be performed on unused bed during machine operation
- Cleans a standard bed in approximately 15 minutes
- For use on most manufactures laser machines
- Dual cutters lift slag from both sides of the slats, changing the cutters accommodates different slat thicknesses
- Simple to start and stop: may be turned on or off at motor box or end of handle
- Resettable over-current protection
- Integrated wheels allow for quick use when placing on machine
- Stores in upright position

Before Picture



After Picture
(middle section only done)



1.866.995.9910

FMS | Fabricating
Machinery
Solutions Inc. ♦

www.fmscanada.ca